



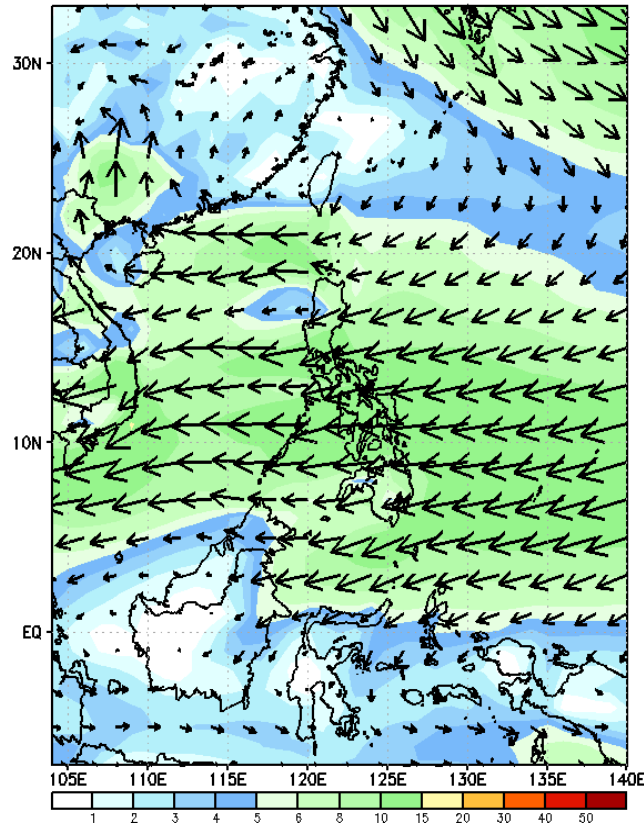
Week 1 & Week 2 Forecast for the Philippines using GEFS Model



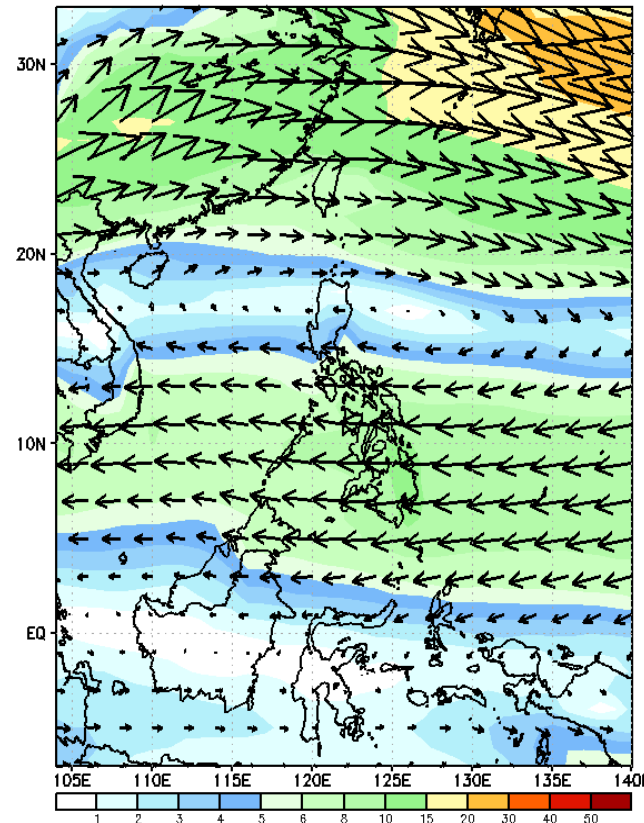
GEFS Week-1 Wind Forecasts:

Week 1: Feb 19-25, 2025

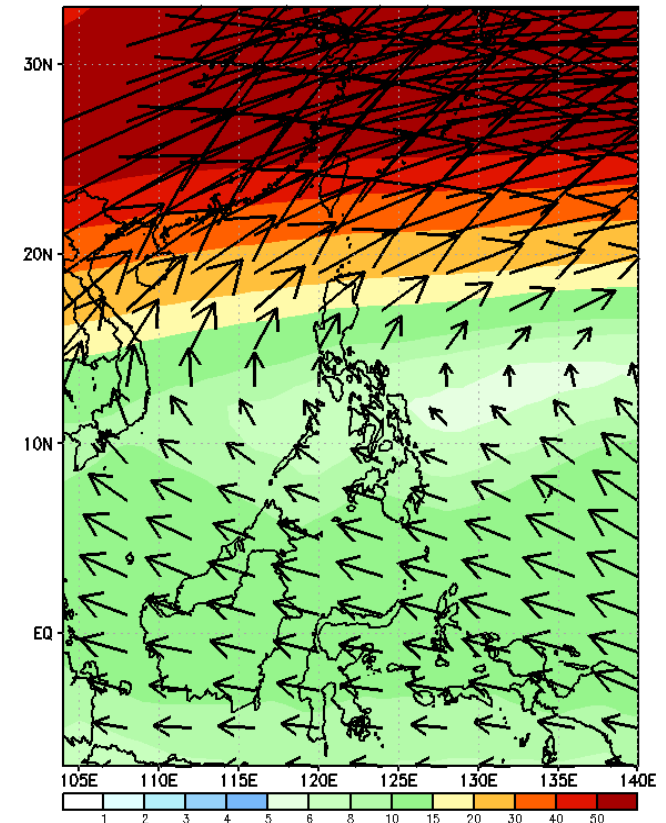
GEFS Week-1 850-hPa Wind Total
Valid: 20250219 - 20250225



GEFS Week-1 700-hPa Wind Total
Valid: 20250219 - 20250225

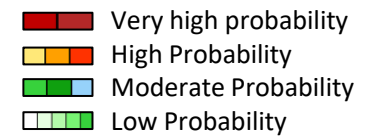


GEFS Week-1 200-hPa Wind Total
Valid: 20250219 - 20250225



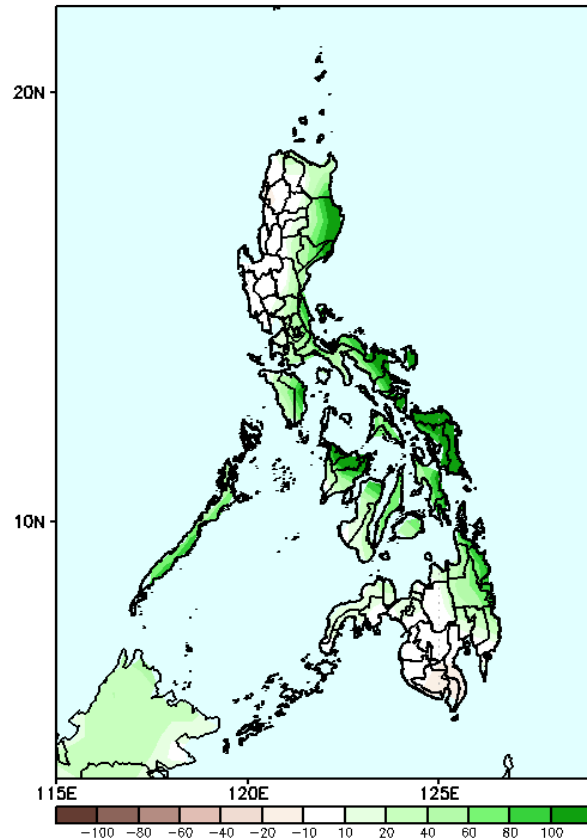
Northeast Monsoon affecting Northern and Central Luzon while Easterlies affecting the rest of the country during the forecast period

Precipitation Anomaly and Exceedance Probability > 25/50 mm



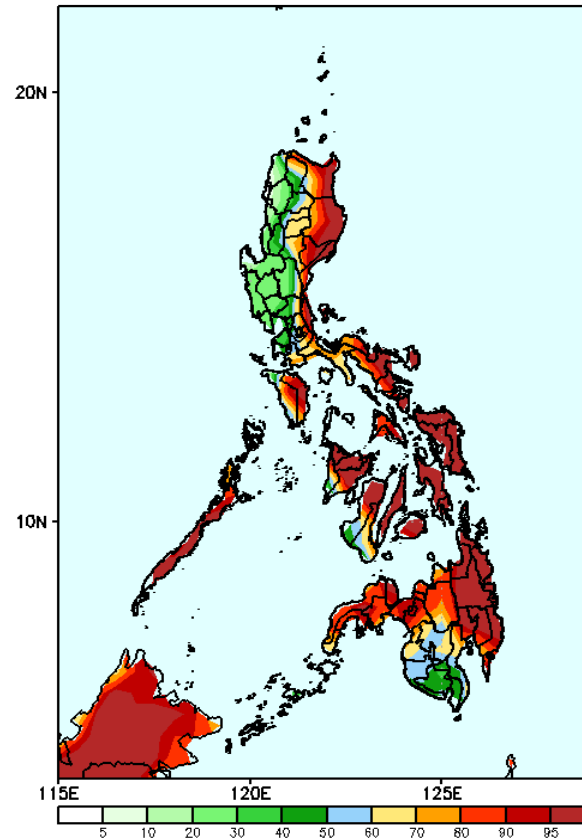
Week 1: Feb 19-25, 2025

GEFS Week-1 Precip Anomaly
Valid: 20250219 - 20250225



Increase of rainfall of 20-80mm is expected in most parts of the country

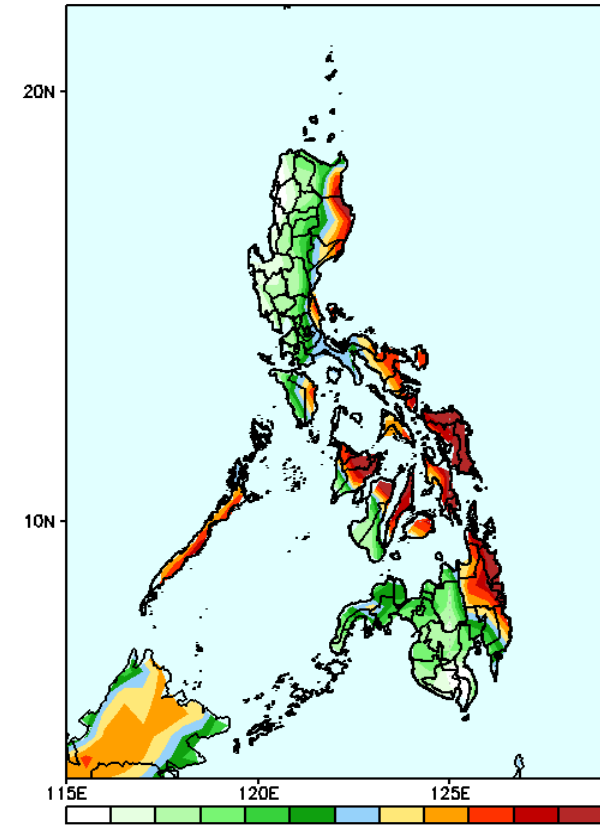
GEFS Week-1 Exceedance Prob. > 25mm
Valid: 20250219 - 20250225



Probability to Exceed 25mm

- High to very high over the eastern parts of Luzon, Oriental Mindoro, Palawan, eastern part of Panay, Central and Eastern Visayas, and the northern and eastern sections of Mindanao;
- Moderate to high over most of CAR, the rest of Southern Luzon, Visayas and Mindanao;
- Low to moderate over the rest of Luzon

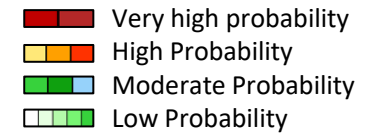
GEFS Week-1 Exceedance Prob. > 50mm
Valid: 20250219 - 20250225



Probability to Exceed 50mm

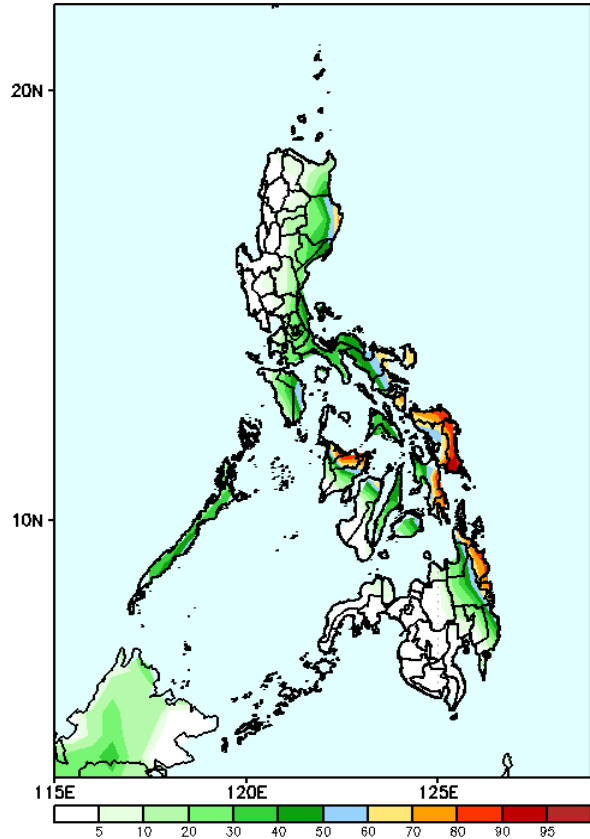
- High to very high over the easternmost part of Cagayan and Isabela, most of Bicol Region, Palawan, Aklan, Capiz, eastern part of Iloilo, northern part of Negros Occidental, Central and Eastern Visayas and Agusan and Surigao Provinces;
- Moderate to high over the rest of Cagayan, Isabela, Aurora, Quezon, Oriental Mindoro, the rest of western Visayas and the central part of Zamboanga Peninsula;

Exceedance Probability > 100/150/200 mm



Week 1: Feb 19-25, 2025

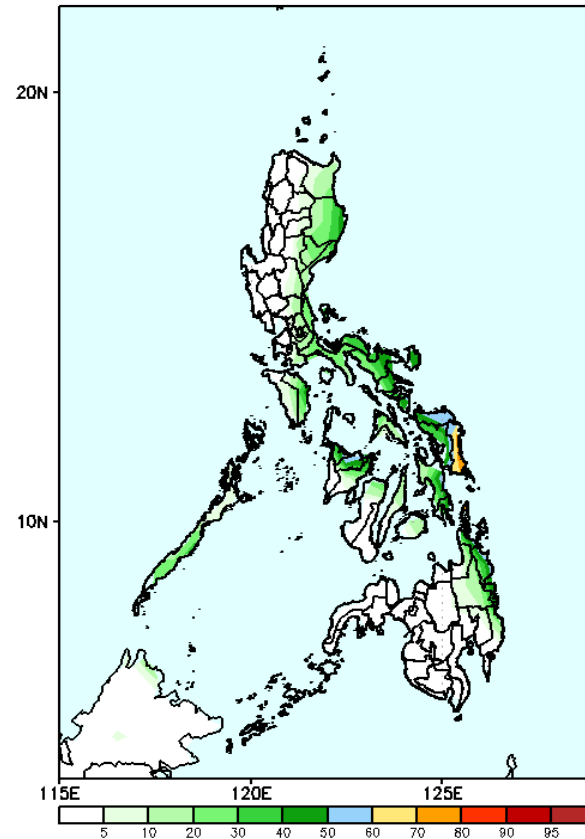
GEFS Week-1 Exceedance Prob. > 100mm
Valid: 20250219 - 20250225



Probability to Exceed 100mm

- High to very high over Northern and Eastern Samar;
- Moderate to high over the easternmost part of Isabela, Bicol Region, northern part of Panay and Negros Occidental, Eastern Visayas, Surigao Provinces and the easternmost part of Agusan Provinces;
- Low to moderate over the rest of Eastern and Southern Luzon, Central Visayas, and the rest of Eastern Mindanao

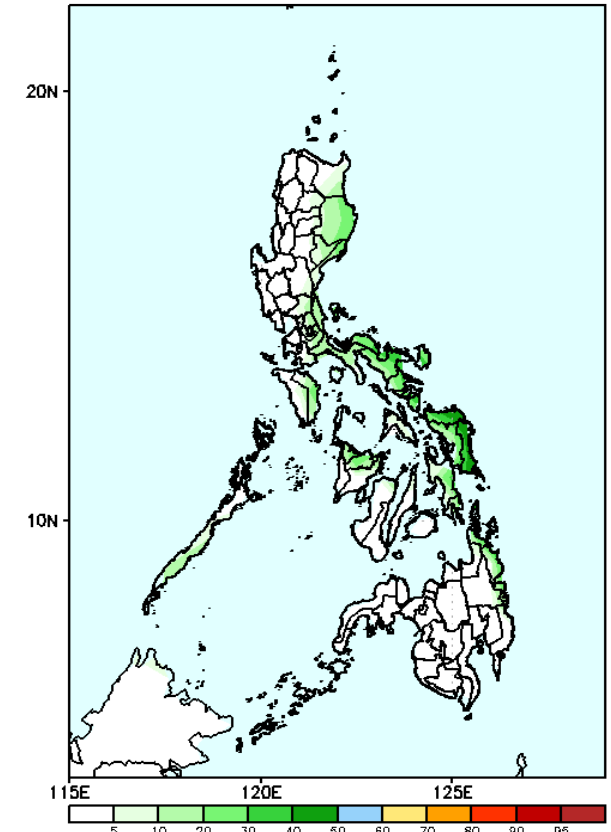
GEFS Week-1 Exceedance Prob. > 150mm
Valid: 20250219 - 20250225



Probability to Exceed 150mm

- Moderate to high over Capiz and Samar Provinces;
- Low to moderate over the Eastern and Southern Luzon, the rest of Eastern Visayas and Surigao Provinces;
- Low over the rest of the country.

GEFS Week-1 Exceedance Prob. > 200mm
Valid: 20250219 - 20250225



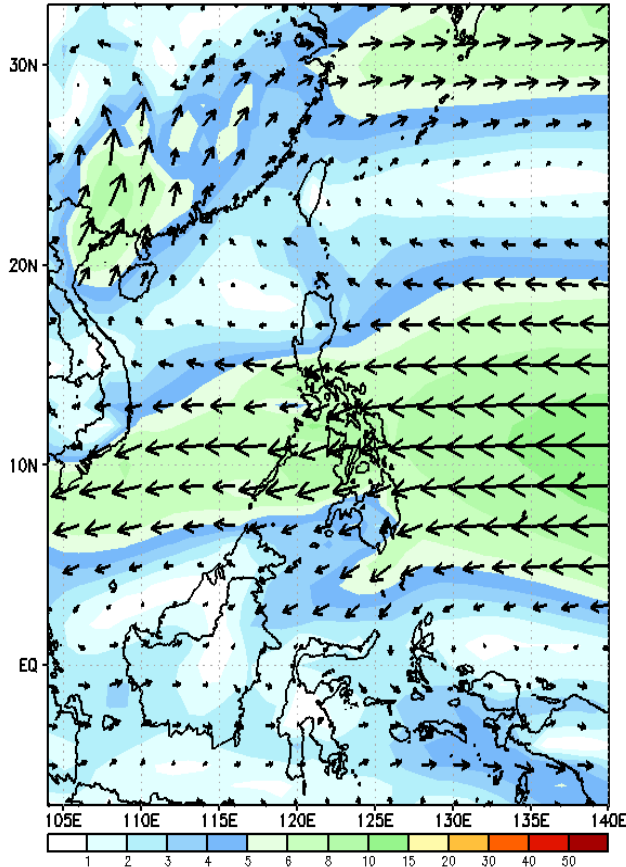
Probability to Exceed 200mm

- Low to moderate over Bicol Region and Eastern Visayas;
- Low over the rest of the country.

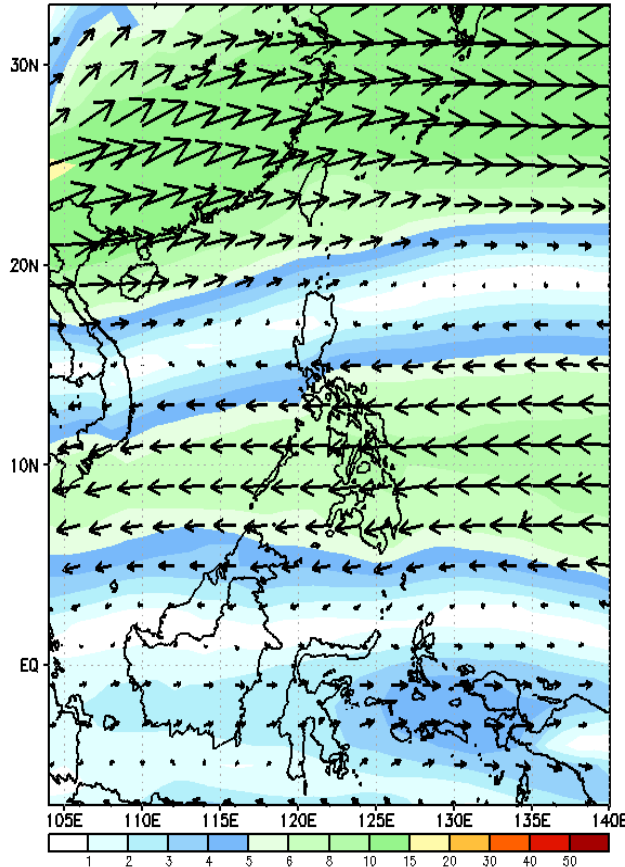
GEFS Week-2 Wind Forecasts:

Week 2: Feb 26-Mar 04, 2025

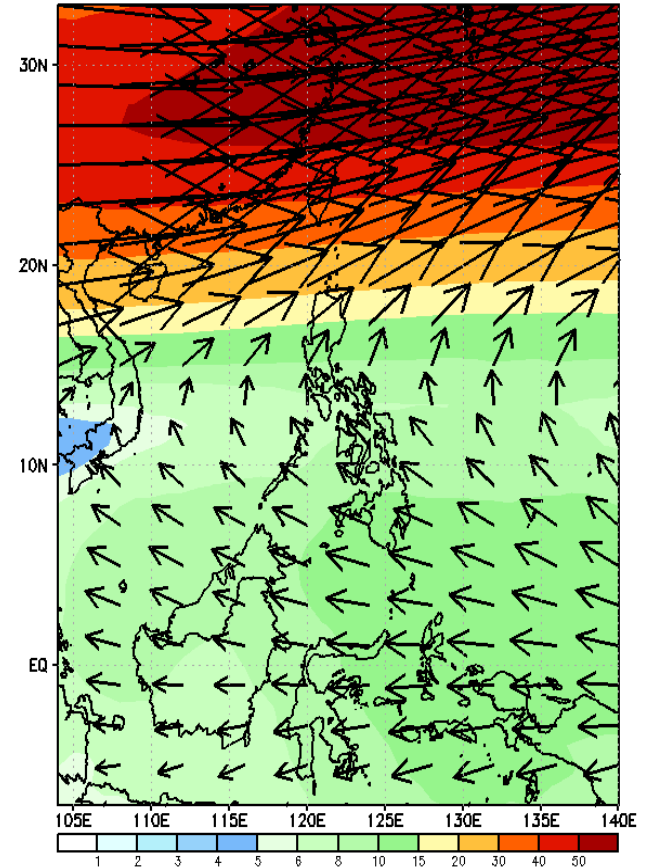
GEFS Week-2 850-hPa Wind Total
Valid: 20250226 - 20250304



GEFS Week-2 700-hPa Wind Total
Valid: 20250226 - 20250304

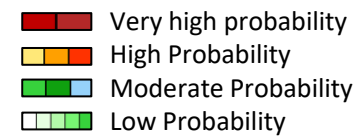


GEFS Week-2 200-hPa Wind Total
Valid: 20250226 - 20250304



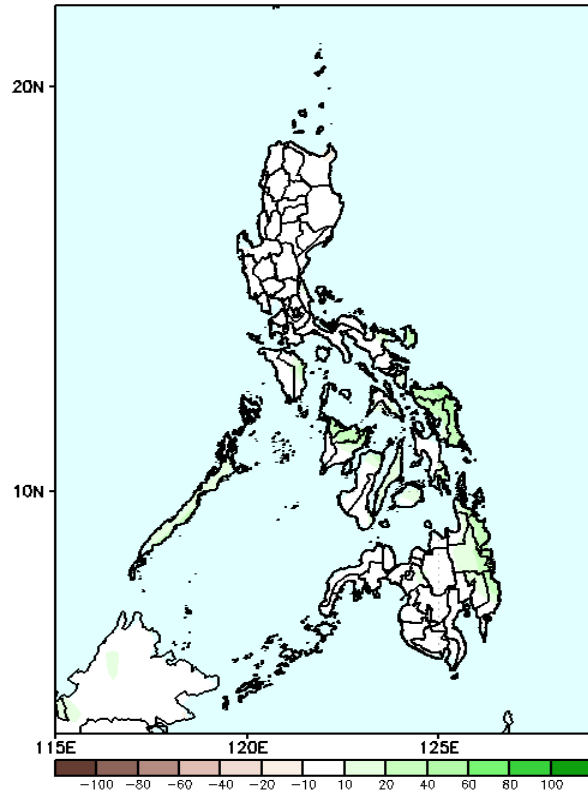
Northeast Monsoon affecting Northern Luzon while Easterlies affecting the rest of the country during the forecast period

Precipitation Anomaly and Exceedance Probability > 25/50 mm



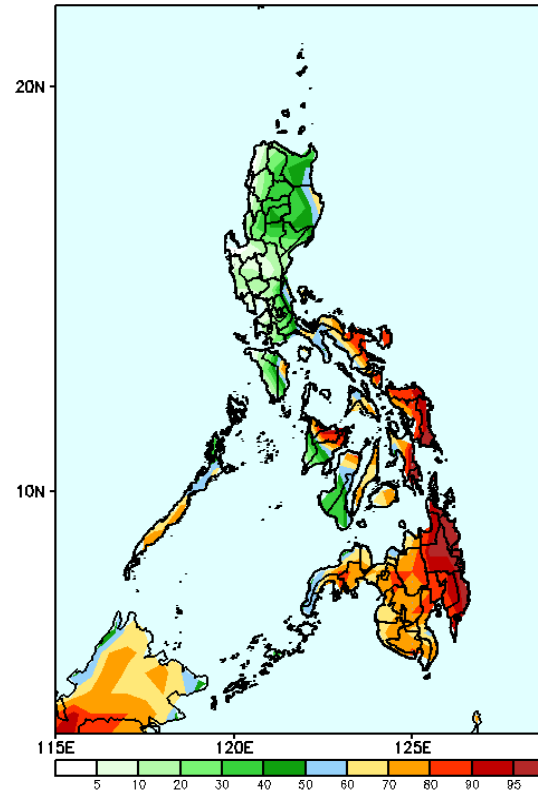
Week 2: Feb 26-Mar 04, 2025

GEFS Week-2 Precip Anomaly
Valid: 20250226 - 20250304



Increase of rainfall of 20-40mm is expected in some areas of Visayas and Mindanao.

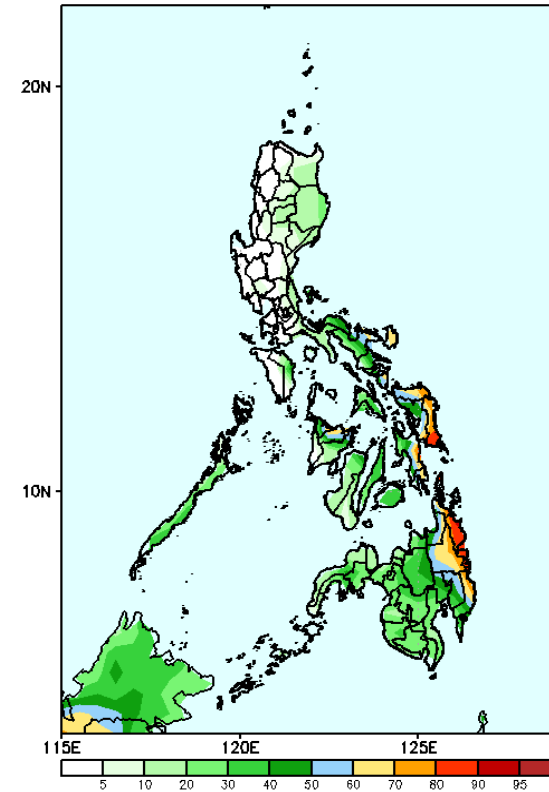
GEFS Week-2 Exceedance Prob. > 25mm
Valid: 20250226 - 20250304



Probability to Exceed 25mm

- High to very high over Samar Provinces and Eastern Mindanao;
- most parts over the eastern parts of the country;
- Moderate to high over the eastern most part of Cagayan and Isabela, Quezon, Bicol Region, most OF MIMAROPA and the rest of Visayas and Mindanao;

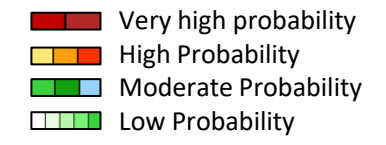
GEFS Week-2 Exceedance Prob. > 50mm
Valid: 20250226 - 20250304



Probability to Exceed 50mm

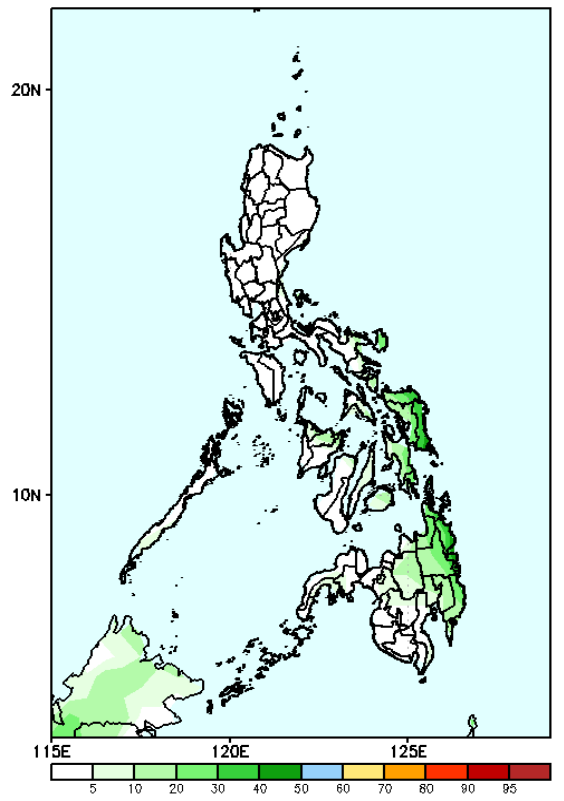
- Moderate to high over the eastern section of Bicol Region, Aklan, Capiz, Eastern Visayas and most of Eastern Mindanao;
- Low to moderate over the rest of the country.

Exceedance Probability > 100/150/200 mm



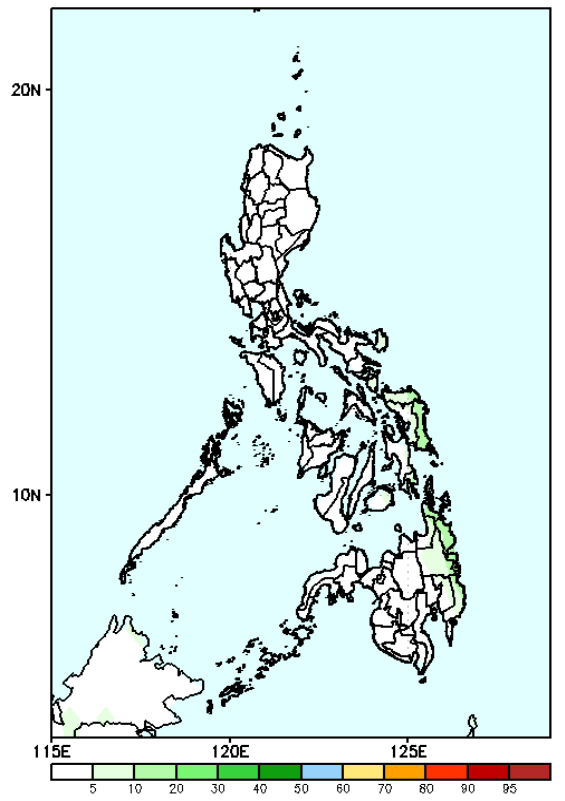
Week 2: Feb 26-Mar 04, 2025

GEFS Week-2 Exceedance Prob. > 100mm
Valid: 20250226 - 20250304



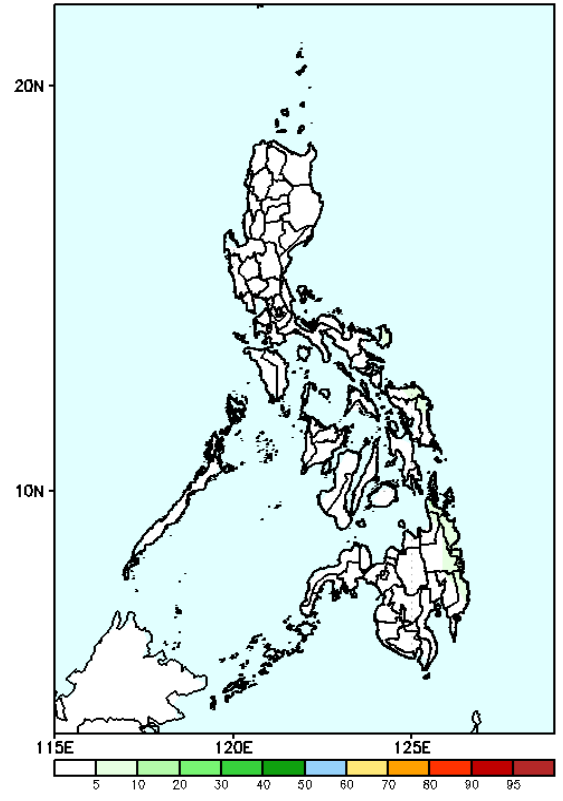
- Probability to Exceed 100mm**
- Low to moderate over the eastern sections of Visayas and Mindanao;
 - Low over the rest of the country.

GEFS Week-2 Exceedance Prob. > 150mm
Valid: 20250226 - 20250304



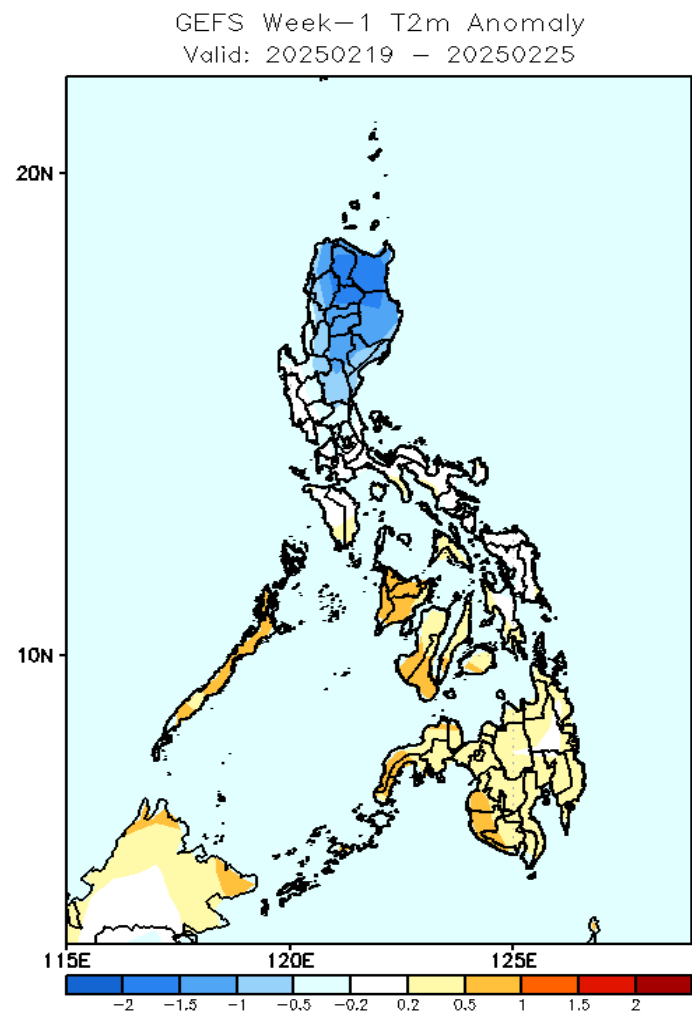
- Probability to Exceed 150mm**
- Low across the country.

GEFS Week-2 Exceedance Prob. > 200mm
Valid: 20250226 - 20250304



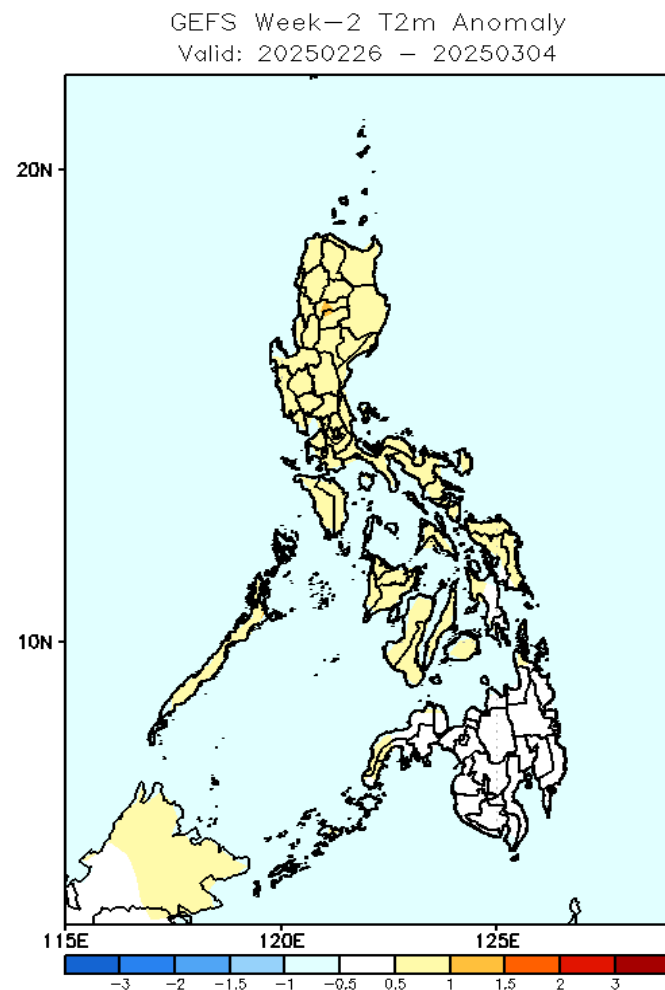
- Probability to Exceed 200mm**
- Low across the country.

GEFS Week-1 & 2 Forecasts: T2m Anomaly



2m Temperature Week 1: Feb 19-25, 2025

Slightly cooler to cooler than average air temperature will likely be experienced in Northern and Central Luzon while near to slightly warmer than average surface air temperature is expected for the rest of the country.



2m Temperature Week 2: Feb 26-Mar 04, 2025

Near to slightly warmer than average surface air temperature will likely be experienced in most parts of the country